

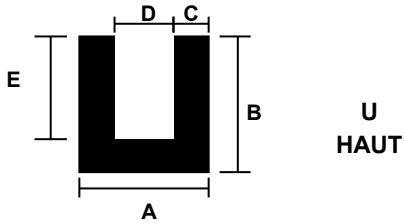
PROFILS A USAGES MULTIPLES

**PROFILS
EXTRUDES**

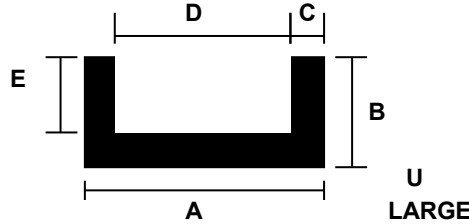


PAGE 5 / A

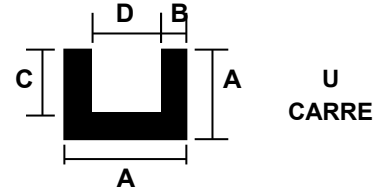
04-oct-17



**U
HAUT**



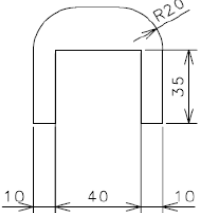
**U
LARGE**



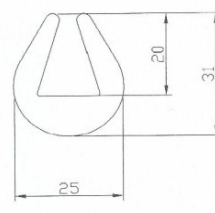
**U
CARRE**

N°	MATIERE	A	B	C	D	E
1281	CR50N	4	7	1.2	1.6	5.8
139	NR60N	5	6	1	3	5
1168	EPR70B	5	7	1	3	6
301	CR60N	5	7	1.5	2	5.5
287	NR70N	5	9	1.5	2	7.5
111	NR60N	5	9	1.9	1.2	7.1
302	CR60N	5	15	1.5	2	10
675	NBR60N	5.6	9.5	1.7	2.2	7.8
276	NR60N	6	7	1	4	6
346	NR70N	6	7	1.75	2.5	5
321	NR70N	6	13	1	4	12
322	NR70N	6	14	1.5	3	12.5
309	NR70N	7	9	1.5	4	7.5
280	NR60N	7	12	2.5	2	9.5
355	NR70N	8	14	1.5	5	12.5
294	NR70N	9	11	2	5	9
1099	EPR60N	9	15	2	5	15
373	CR60N	9	15	2	5	13
699	NR70N	9	16.5	3	3	13.5
774	NBR60B	9	25	2	5	23
348	NR60N	10	14	2	6	12
73	NR60N	10	16	2.5	5	13.5
738	NBR50N	10	20	1	8	19
653	NR60N	10	20	2	6	18
1061	EPR50N	11	50	3	5	25
175	NR70N	12	14	2	8	12
1098	EPR60N	12	18	2	8	15
331	NR60N	12	22.5	4.25	3.5	12.5
273	NR60N	12	25	2	8	23
411	NR70N	13	14	1.5	10	12.5
405	CR60N	14	23	3	8	20
60	NBR60N	14	25	6	2	15
59	NBR70N	14	25	2	10	23
1260	NR60N	15	17	5	5	12
1332	EPR65N	15	18.5	2	11	16.5
877	CR65N	15	25	5	5	20
1121	EPR50N	16	35	2	12	33
406	CR60N	18	23	3	12	17
672	CR70N	18	20	4	10	12
162	NR60N	19	30	2	15	28
878	CR65N	20	25	5	10	20
419	NR50R	20	30	7	6	22
764	NR45B	20	30	9	2	23
497	NR60N	20	50	5	10	45
923	NR90N	20.3	25	4	12.3	19
421	NR50R	22	32	8	8	24
290	NR60N	30	80	5	20	60
482.3	EPR55N	35	80	4.5	26	75

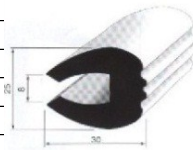
N°	MATIERE	A	B	C	D	E
499	CR50N	11	7	1.5	8	5.5
887	EPR50N	11	7	3	7	4
70	NR60N	11	10	3	5	7
858	EPR50N	15	11.5	1.5	12	10
403	NR70N	16	4	2	12	2
176	CR60N	16.5	15	5	6.5	10
963	CR65N	20	15	6	8	9
631	NR55N	25	6	3	19	3
186	CR60N	28	19	4	20	15
757	CR65N	29.5	14	4	21.5	10
136	EPR60N	31	7.5	2.75	25.5	1.5
336	NBR60N	36	24	8	20	16
826	CR65N	38	12.7	6.2	25.4	6.4
630	EPR60N	40	30	5	30	25
753	EPR55N	41	14	7	27	7
686	NR60N	46	14	4	38	10
734	NBR70N	47	5	7.5	32	1.5
366	CR70B	57	24	8	41	16
947.3	EPR65N	85	50	6	73	44
900	EPR50N	90	10	5	80	5
778.3	CR55N	95	80	8	79	72
694.3	NR70N	100	50	20	60	30
1447.1	EPR80N	10	5	3	4	2.5



F1434.1 EPR 80SH N

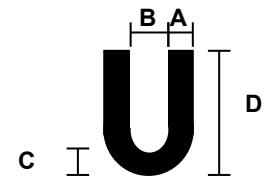


F1435.1 EPR Violet 65Sh

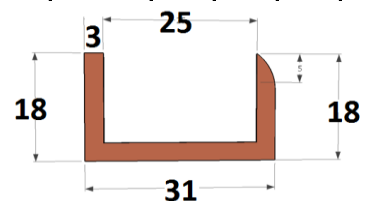


F1463.1 EPR60N/B

N°	MATIERE	A	B	C	D
227	NR60N	4	1	3	2
1251	CR70N	5	1	4	3
75	NR60N	8	1.5	6.5	5
69	CR60N	10	2	8	6
72	NR60N	10	3	7	4
286	NR70N	10	2	8	6
790	CR60N	25	8	17	9
735	NBR60N	40	4	36	32



N°	MATIERE	A	B	C	D
1254	NBR60B	1.5	5	1.5	5
492	CR60N	2	2.5	2	10
277	NR70N	1		1	10
329	NR70N	1.9	1.2	1.9	11.5
1396	NBR60B	1.5	2	1.5	11.5
854	EPR65N	1.6	6	1.6	13.6
1051	CR50N	2	3	2	14
797	NR60N	3	5	3	15
992	EPR55N	1	6.4	1	15
867	EPR60N	1.6	1.6	3.2	15.9
1102	NBR75B	1.5	3	1.5	16
592	NR60N	2	4	2	19
285	EPR50N	1		1	20
340	CR60N	2	2.5	2	20
994	EPR60N	1.5	1.5	1.5	20
1376	SIL50N	2	2	2	25
463	EPR50N	4	5	4	85



1405 EPR70M

Attention , planche évoluant constamment . Nous consulter systématiquement