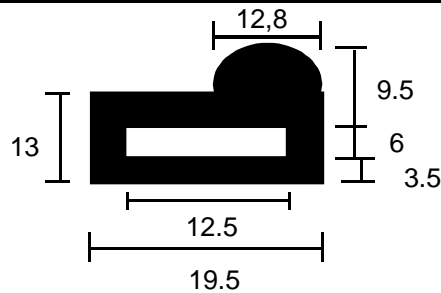
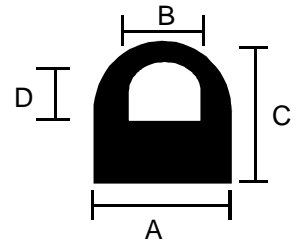


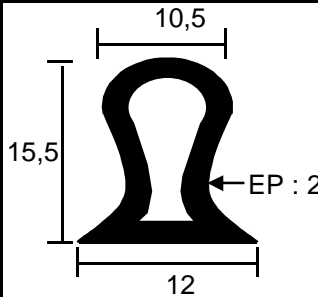
F 1183 EPDM60N



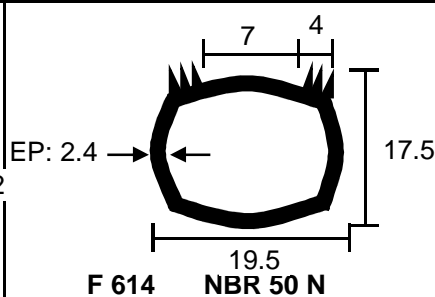
F 1113 CR 70 N



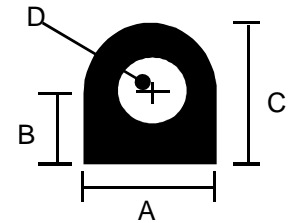
N°	Matière	A	B	C	D
183	CR60N	8	6	14	5
365	CR60N	2,5	1	6	5



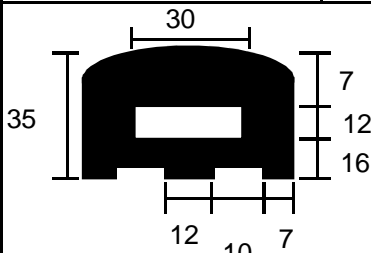
F 351 NR 70 N



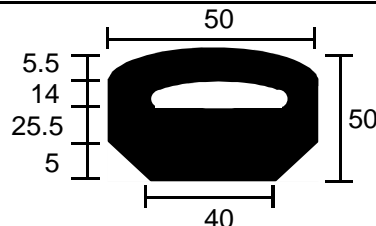
F 614 NBR 50 N
F 1021 NR 70 N



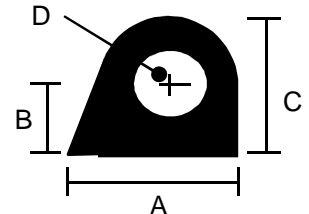
N°	Matière	A	B	C	D
1144	CR70N	11	6	12	5,5
783	CR70N	13,5		13	7



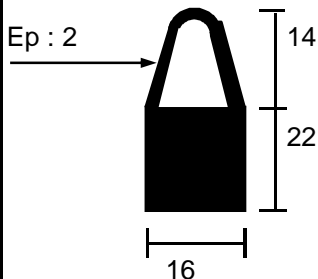
F 550 EPR 55 N



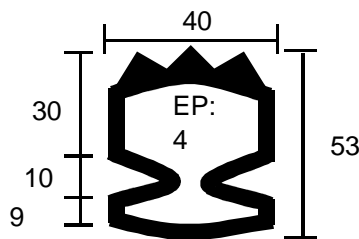
F 199 CR 60 N



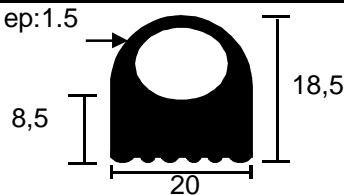
N°	Matière	A	B	C	D
786	EPR50N	10		8	4
750	EPR55N	17,2		13	7



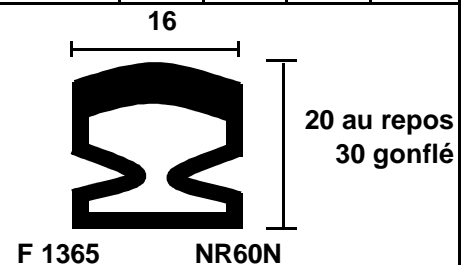
F 1271 CR70N



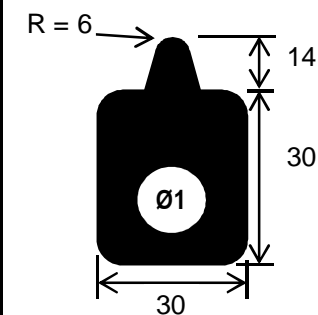
F 1263 EPR 70 B



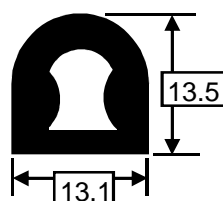
F 1270 CR70N



F 1365 NR60N



F 1335 FPM 70N



F 1354 HNBR70N