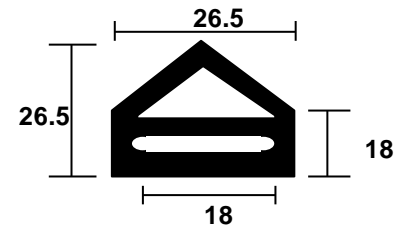
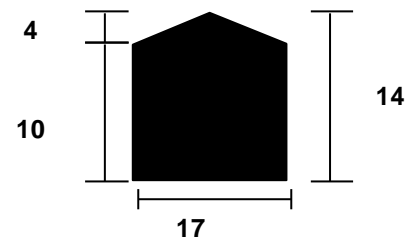


N°	MATIERE	A	B	R	N°	MATIERE	A	B
300	CR60N	8	11	3.25	1150	NR70N	7	3
84	NBR50N	18	12.1	6	363	NR70N	20	36
848.3	EPR50N	74	35	5	370	NR60N	55	55
913	EPR60N	40	20	5	1185	NR60N	150	80

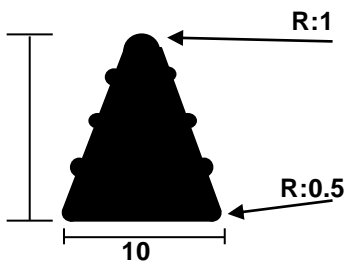
N° 906 NBR60N



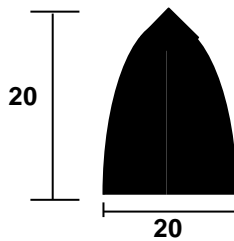
N° 737 CR65N



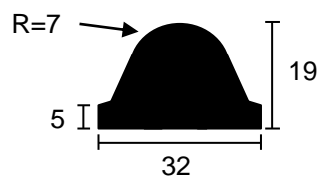
N° 533 NR60N



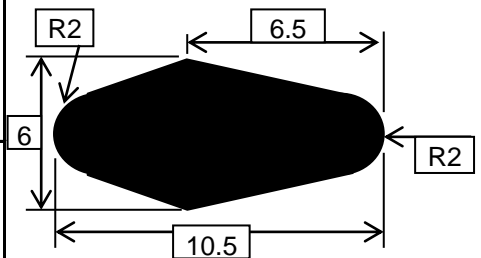
N° 135 NR45M



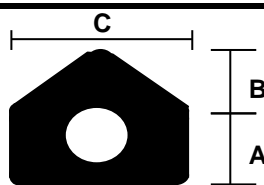
N° 857 IIR60N



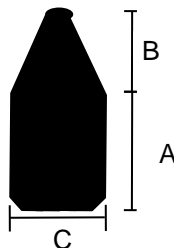
F 1221 EPR 50 N



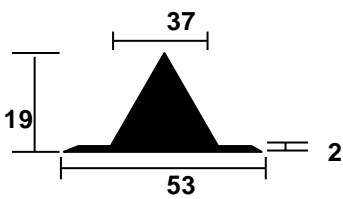
F 1283 NBR 70 N



N°	Matière	A	B	C
1337	FKM70N	30	14	30
1353	FKM70N	30	14	30



N°	Matière	A	B	C
640	CR 70 N	11	9	9.3



N° 1107 EPR60N

Attention , planche évoluant constamment . Nous consulter systématiquement