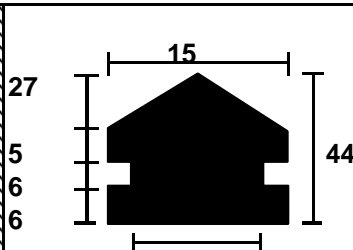
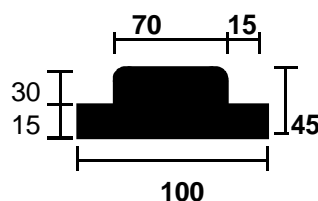


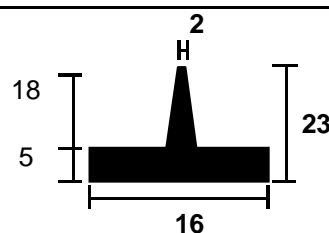
N°	MATIERE	A	B	C	D	E
263	NBR60N	10	6	6	2	9
739	CSM70B	12	5	10	5	15
1344	EPR45N	14,2	9,2	7,7	4,5	12,2
1380	EPR70N	14	8	1	4	4
822	NR50N	15	5	10	3	9
539	NR60N	16	8	8	16	24
530	NR75N	18	8	12	46	58
606	NR50G	30	3	3	16	19
1128	EPR50N	34	26	6	5	11
595	NR50G	43	3	3	16	19
565	CR60N	45	30	14	16	30



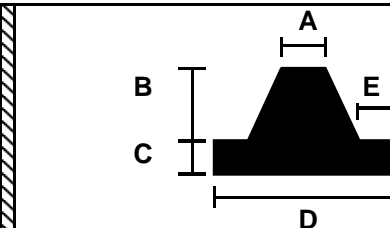
N° 9
676 NBR70N



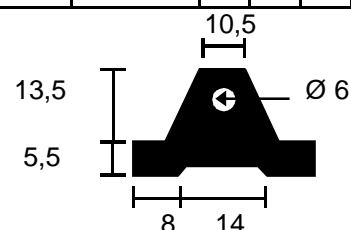
N° 899,3
NR75N



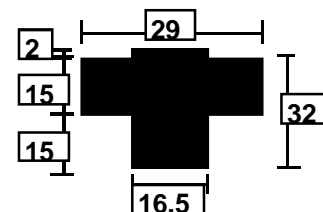
N° 818
NR85N



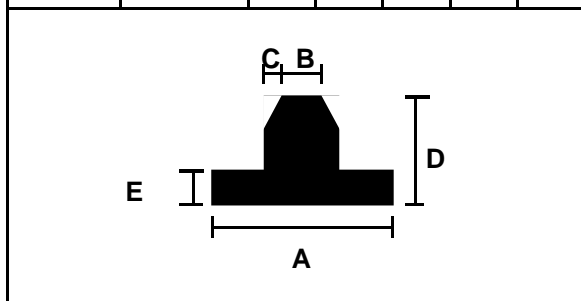
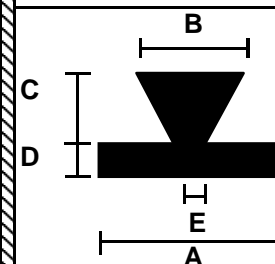
N°	MATIERE	A	B	C	D	E
554	NR60N	14	12	2	32	5
1191	NR60N	15	14	1,5	35	5



N° 455
NBR 70 N



N° 1345
EPR 55 N



N°	MATIERE	A	B	C	D	E
393	NR60N	32	20	2,5	35	10
318	NR960N	42	34	0,5	40	10

N°	Matière	A	B	C	D	E
680	NBR60N	19	10	5	3	8
1163	EPR50N	19	9	5	3	4

Attention , planche évoluant constamment . Nous consulter systématiquement