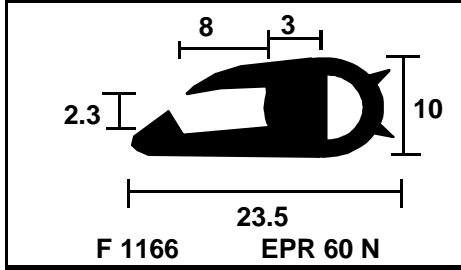
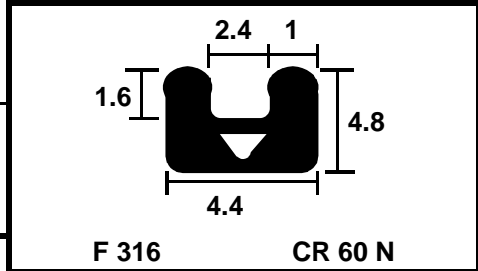
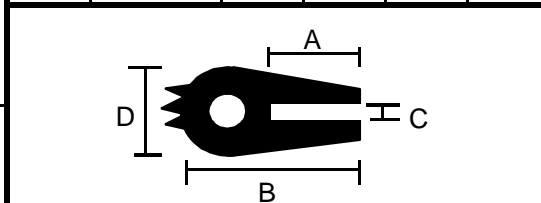
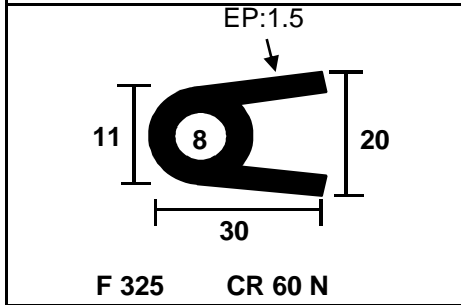
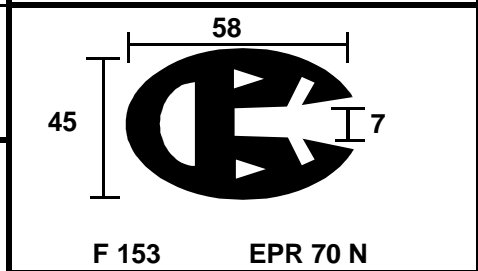
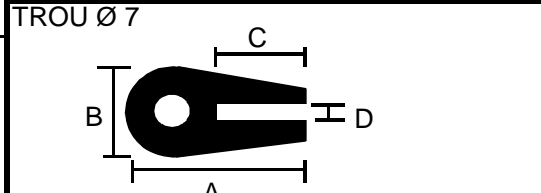


N°	MATIERE	A	B	C	D
1038	NBR70N	25	17	2	8
1039	NBR70N	27,5	17	3,5	12,5



TROU Ø 7

N°	MATIERE	A	B	C	D
1079	CSM70N	13	26	1,5	15
1023	EPR55N	15	28	3	16



N°	MATIERE	A	B	C	D
1304	EPR70N	20	10	10	0,8
440	EPR55N	25	10	12	2
1257	EPR60N	30	13	14	5