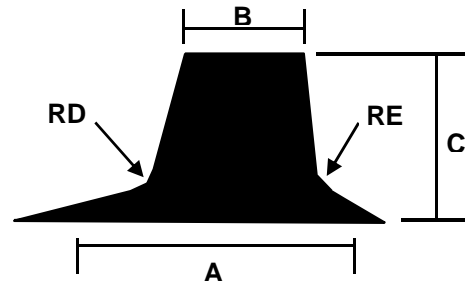
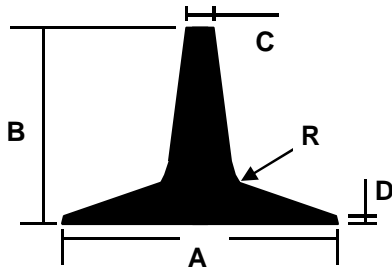
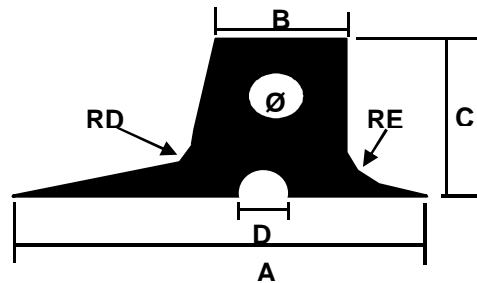


**TASSEaux**

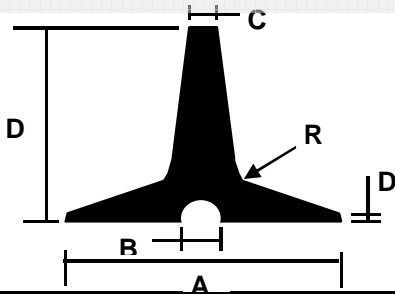


N°	Matière	A	B	C	D	R
520	NR60N	50	20		2,5	5
484	NR60N	27	35	4	1,5	10
467	NR60N	52	50	6	1,2	5
493	NBR60N	52	50	6	1,2	5
473,3	NR60N	71	75	9	1	15
473,3	CR70N	71	75	9	1	15
610,3	NR60N	71	75	9	1	15
474,3	NR60N	90	115	12	2	
470,3	NR60N	120	140	16	3	30

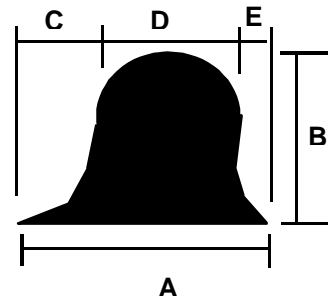
N°	Matière	A	B	C	RD	RE
504	NR60N	40	18	20	6	6
507	NR60N	34	15	15	18	10



N°	Matière	A	B	C	D	RD	RE	Ø
544	NR55N	70	25	35	10	20	17	8
555	NR60N	85	18	50	14	25	15	9



N°	Matière	A	B	C	D	R
549	NR60N	30	6	5	20	
505	NR60N	40	8	4	35	5
502	NR75N	45	8	5	40	10
521	NR60N	45	9	5	50	6
529	NR75N	55	10	8	55	20
540	NR75N	60	12	5	70	8
519,3	NR75N	90	16	12	115	
527,3	NR75N	140	20	16	185	28



N°	Matière	A	B	C	D	E
389	NR60N	76	51	13	46	17
391	NR60N	75	36	9	50	16

