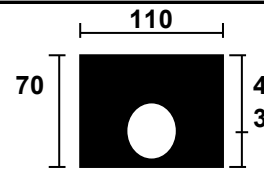


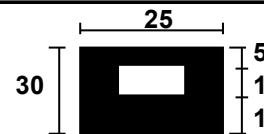
N°	MATIERE	A	N°	MATIERE	A
428	CR60N	4	572	CR70N	15
159	CR60N	6	92	NR60N	16
230	CR60N	7	89	SBR70N	15
231	NR70N	8	577	CR60N	17
537	NR60B	8	449	CR80N	19
901	NR45M	8	449	NR80N	19.1
936	EPR50N	8	476	NR80N	19.5
557	NR50B	10	883	NR45M	20
535	NR60B	10	561	NR80N	20
541	CR40B	10	333	CR40N	20
210	CR60N	10	202	CR60N	20
161	NBR60N	10	208	NBR60N	20
1152	NBR40N	11	488	NR80N	21
200	NR60N	12	1116	CR60N	22
534	NR60B	12	222	NR70N	25
657	NR45M	12.5	892	NR45N	25
853	EPR65N	14	568	CR60B	25
763	EPR50N	14	266	NR60N	40
229	NR70N	14.5	895.3	EPR65N	52
89	NR60N	15			

TROU Diamètre 12.5

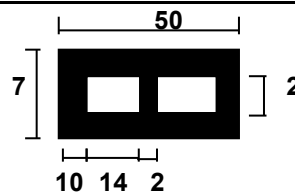
F 628 EPR 55 N



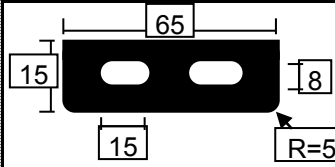
F 1139 CR 70 N



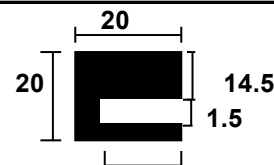
F 985 NR 45 M



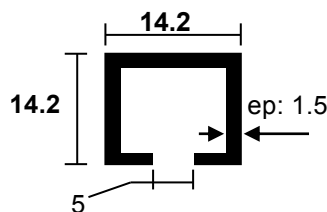
F 369 CR 60 N



F 1 375 CR 40 N

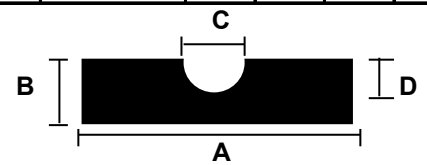


F 478 CR 50 G

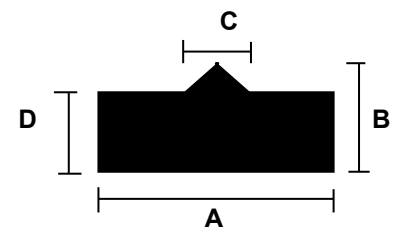


F 1301 NBR 90 N

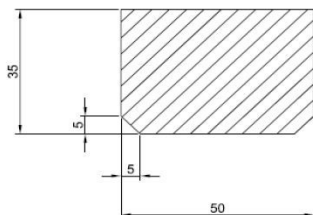
N°	MATIERE	A	B	Ep	
917	EPR50N	24	8	3	
1149	IIR60N	22	18	2	
1310	NR50N	50	8	2.5	
1366	EPR65N	22	9	3	
1389	CR70N	50	50	10	carré
1406	FPM70N	66	28	4	
1454	NR70N	71	22	5	



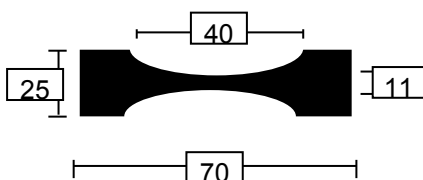
N°	MATIERE	A	B	C	D
1327	EPR50N	30	15	20	10
551.3	CR60N	102	15	11.5	5.5
542.3	CR60N	102	15	13.5	6.5
559.3	CR60N	105	15	9.5	4.5
560.3	CR60N	105	15	10.5	5
556.3	CR60N	105	15	15.5	7.5



N°	MATIERE	A	B	C	D
971	NR60B	25	7.5	3	6
991	NR45B	30	7.5	2.5	5



1466
EPR80N ACS



F 1347 CR 35 G