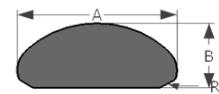


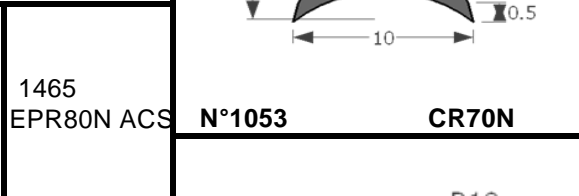
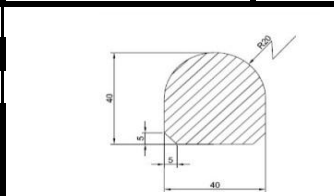
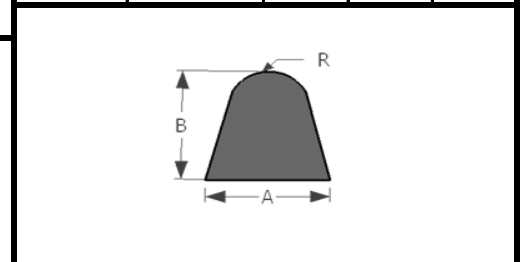
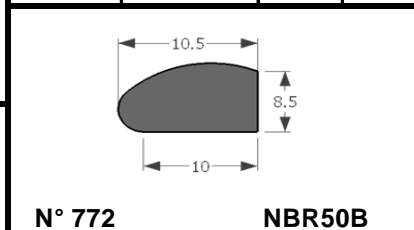
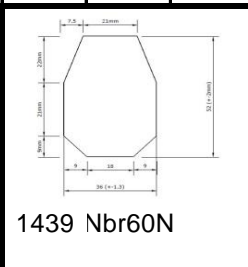
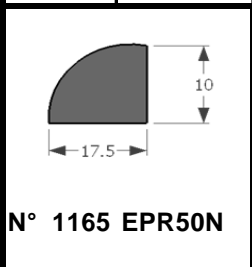
N°	MATIERE	A	B	R
1222	EPR50N	7	7	5
337	CR60N	8.5	10.5	
1318	NR40M	9	20	4.5
1240	EPR70N	10	15	5
593	NR60N	10	12	5
195	NR60N	11	11	5.5
195	NR40M	11	11	5.5
581	FPM70N	11	13	5.5
275	CR60N	12	14	6
113	NR60N	13	13	6.5
817	NR45M	13.5	10.5	6.75
424	NR50M	15	22.5	7.5
964	CR55N	16	25	8
1073	NBR60N	20	20	10
104	CR60N	20	22	10
1090	EPR80N	20	22	10
334	CR40N	30	25	
1384	FPM70N	30	30	15
1325	EPR70N	10	43	5
443	NR70N	40	50	20
599.3	CR60N	50	70	25

N°	MATIERE	A	B
1172	CR55N	7	7.5
129	CR60N	8.5	5.5
953	NBR60N	10	5
946	EPR60N	15	3
206	NR60R	17	11
448	CR60N	18	10
205	NR60R	18	10.5
85	NR60N	20	12
215	NR70N	30	15
341	NR70N	40	20
249	CR60N	50	18
1025	NR60N	80	20
1026.3	NR60N	120	35
920.3	EPR50N	150	20

N°	MATIERE	A	B	C
1339	NR45N	14	11	11
909	NR60N	15	10	18
794	NR60N	15	10	18
1340	NR45N	20	17	14



N°	MATIERE	A	B	R
634	NBR60N	13.5	6.35	2



N°	MATIERE	A	B	R
792	NBR60N	15	16	7
885	EPR65N	19	21	
1206	IIR60N	35	35	5
913	EPR70N	40	20	

